



Certificate of Analysis

UElancy Inc.

Room 302, Building 1, No.18& Chunyao Road,

Xiangcheng District, Suzhou,

Jiangsu Province P.R, 215143 China

www.uelancy.com

Refer to website for regional contact information.

Product Name:	S1 buffer for UE-MN-P-500,150mL	Lot ID:	220627M01-01
Catalog Number:	UE-MN-P-500-S1	Expiration Date:	6/26/2025

Quality Control

Spectrophotometric Analysis

- Acceptable Range for $A_{260}/A_{280}=1.8\pm0.15$.
- Comparison of the Test Sample to a previously tested Standard. Acceptable range for Test Sample is $\leq \pm 10\%$ of Standard, based upon spectrophotometric analysis. The "Standard" is a previously tested and validated sample.

Restriction Analysis

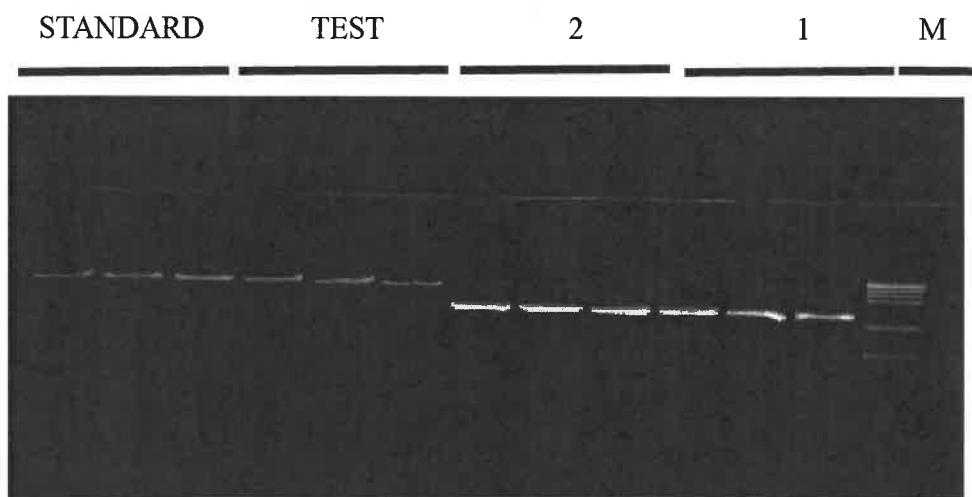
- 1 μ g of plasmid is digested to completion by EcoRI

Electrophoretic Analysis

- Agarose gel electrophoresis of the samples exhibits a defined plasmid band with no degradation.
- Agarose gel electrophoresis of the samples exhibits no contaminating RNA.
- Agarose gel electrophoresis of the samples exhibits no contaminating bacterial genomic DNA.

Gel Image and Test Data

Item	Test Date						Sample
	1	2	3	4	5	6	
A260	0.9361	0.9292	0.8535	0.9203	1.0498	0.9791	1,2,3 are duplicate Test Samples 4,5,6 are duplicate Standards
A280	0.4932	0.4892	0.4479	0.4817	0.5635	0.5143	
A260/A280	1.8981	1.8995	1.9054	1.9106	1.8631	1.9037	
Yield (μ g)	14.0408	13.9385	12.8026	13.8039	15.7475	14.6869	
Electrophoresis	✓	✓	✓	✓	✓	✓	PASS
No visible RNA	✓	✓	✓	✓	✓	✓	
Endonuclease digest	✓	✓	✓	✓	✓	✓	
[Test Sample/Standard] Yield Difference	7.81%						PASS



※1 and 2 respectively represent the test and standard enzyme digestion

UElandy Inc. warrants and represents that all inspections and testing for the article described above have been performed at UElandy Inc. QC laboratory located on-site at the manufacturing plant. UElandy Inc. manufacturing facility is located at Room 302, Building 1, No.18& Chunyao Road, Xiangcheng District, Suzhou, Jiangsu Province P.R, 215143 China

(QC Inspector) *tian qin zheng*

(Approver) *Bin hua Yu 12.08-2022*